



OpreX™ Field Instruments

Vortex Flowmeter VY Series

Designed by Total Insight concept

As the inventor of the vortex flowmeter,
Yokogawa is bringing the vortex technology to a new era

Seamless integration into Digital transformation

Since we brought out the world's first vortex flowmeter for process control market 1969, Yokogawa is the leading supplier of vortex flowmeters worldwide. The VY series has inherited the superior YEWFLO's sensing structure and evolved from Sensing to Sensemaking combining reliable technology with superior field knowledge on the path to digitalization.

Digitalization

Supporting efficient and planned plant operations

Remote maintenance

Self diagnostic



Vortex Flowmeter
VY series

Inheritance

Stable measurement and high maintainability

Yokogawa unique detection structure brings robustness and long term stability

Well-established vibration resistance



The VY series is designed based on the Total Insight concept



Simplified Selection

Engineering and Procurement

Truly universal lineup

- Model selection is easy
- Supports a wide range of standards
- Built-in abundant calculation function



Total Insight is the product to support customers every phase of the product lifecycle

Through excellence in the technology and insight throughout the plant lifecycle, we evolve products to provide new value for optimization of total expenditure.



Smart Assist

Installation and Commissioning

Vibration-resistant and stable flow measurement

- Realizes stable measurements
- Accurately captures flow signals
- Ready to use right after installation



Expert Solution

Utility and Maintenance

Smart device maintenance

- Easy to identify process-side or device-side abnormality
- Easy maintenance
- Reduced downtime



Process Guard

Operation and Observation

Advanced self-diagnostics and remote maintenance

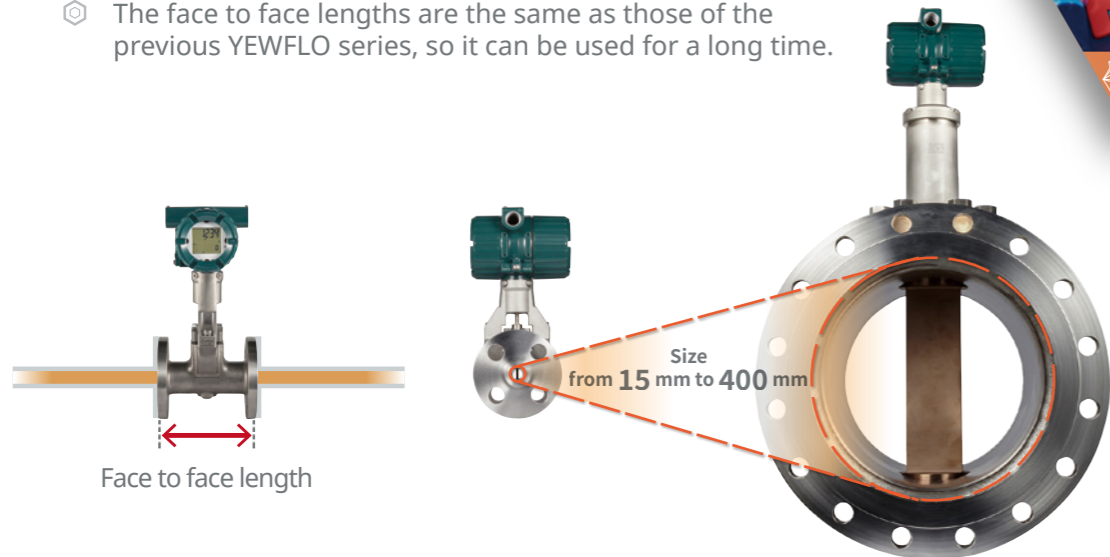
- Ready to diagnose all function blocks
- Confirms device health from remote locations such as instrument room
- Supports condition-based maintenance

✓ Simplified Selection
Engineering and Procurement

Truly universal lineup

Model selection is easy

- ⊕ Provides specification selection tools including sizing
- ⊕ A wide flow range up to size 400 mm is available. And the Reduced Bore Type can be supported by two sizes down.
- ⊕ The face to face lengths are the same as those of the previous YEWFO series, so it can be used for a long time.



Supports a wide range of standards

- ⊕ Functional Safety IEC 61508 compliant Safety Integrity Level SIL2
- ⊕ General Safety, EMC, PED, EUroHS, CE Mark, CRN, ABS / DNV ship's classification
- ⊕ Industry standards: NAMUR NE21 , NE107, NACE materials

Built-in abundant calculation function

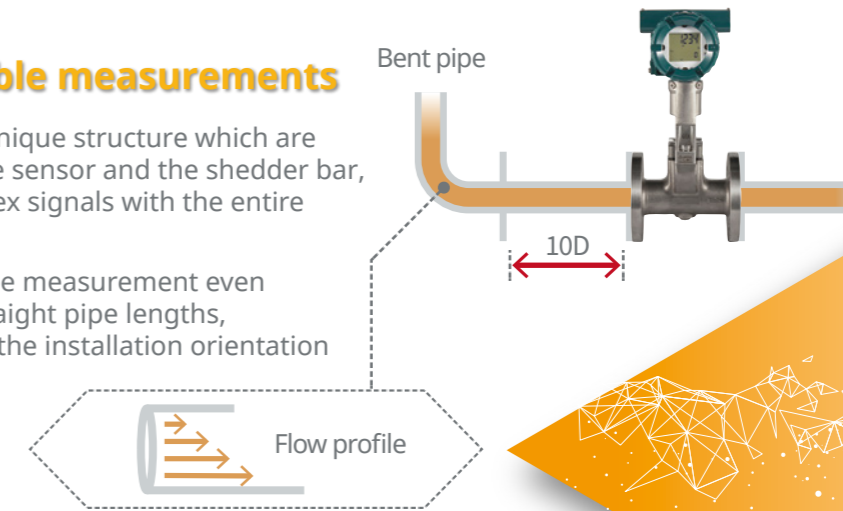
- ⊕ Yokogawa's unique structure which are integrated the sensor and the shedder bar, captures vortex signals with the entire shedder bar
- ⊕ Provides stable measurement even with short straight pipe lengths, regardless of the installation orientation

Smart Assist
Installation and Commissioning

Vibration-resistant and stable flow measurement

Realizes stable measurements

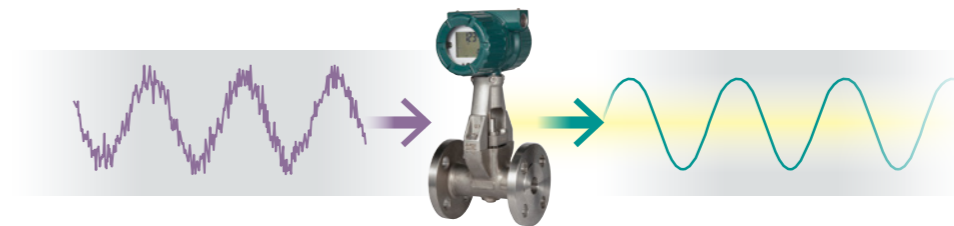
- ⊕ Yokogawa's unique structure which are integrated the sensor and the shedder bar, captures vortex signals with the entire shedder bar
- ⊕ Provides stable measurement even with short straight pipe lengths, regardless of the installation orientation



Accurately captures flow signals

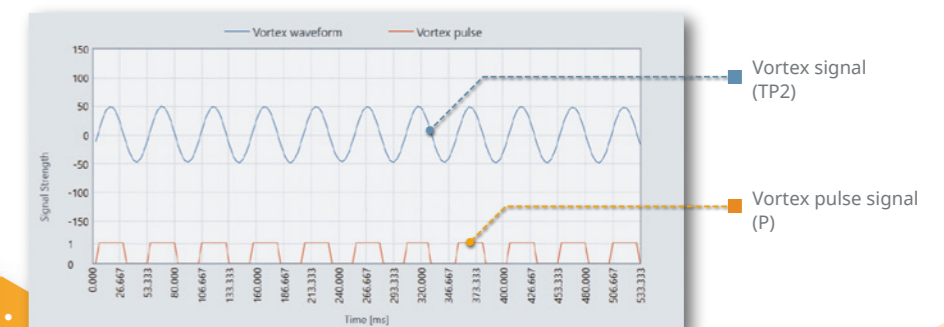
- ⊕ Unique structure with two sensor elements cancels piping vibration noise
- ⊕ Mature and proprietary digital signal processing technology (SSP*) eliminates noise and extracts vortex signals only
- ⊕ Alarm outputs possible false outputs due to piping vibration

SSP: Yokogawa's proprietary signal processing that removes noise extracts vortex signals from two sensor elements.



Ready to use right after installation

- ⊕ Parameters are factory-set before shipment
- ⊕ Automatic adjustment function of SSP makes field adjustment omitted
- ⊕ Verification tools including Waveform monitoring facilitate post-installation condition checks

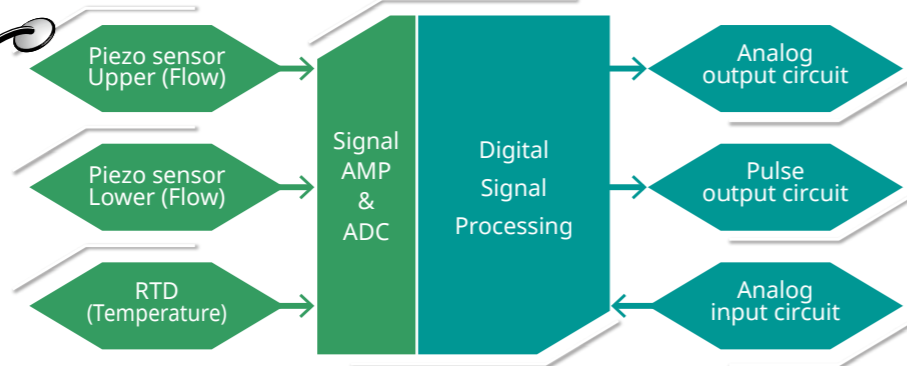


Vortex waveform monitor

Advanced self-diagnostics and remote maintenance

Ready to diagnose all function blocks

- ⊞ All functional blocks are self-diagnosed in compliance with the requirements of the SIL2 standard for functional safety
- ⊞ Easily identifies where device maintenance is required



| Standard Verification | | |
|-----------------------|--------|---------------------|
| Result | Time | |
| Circuit | Passed | 2022/01/12 21:20:13 |
| Device Status | Passed | 2022/01/12 21:20:13 |
| Physical Appearance | Passed | 2022/01/12 21:20:24 |
| Display | Passed | 2022/01/12 21:21:00 |

| Enhanced Verification | | |
|-----------------------|--------|---------------------|
| Result | Time | |
| Analog Output | Passed | 2022/01/12 21:21:35 |
| Pulse Output | Passed | 2022/01/12 21:23:23 |
| Status Output | Passed | 2022/01/12 21:24:54 |
| Analog Input | Passed | 2022/01/12 21:24:54 |

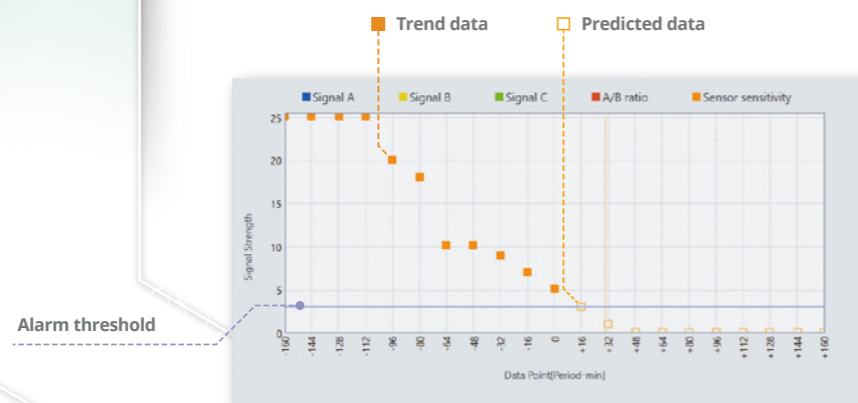
Confirms device health from remote locations such as instrument room

- ⊞ Wizard style remote maintenance with FSA130 Verification Tool
- ⊞ Check vortex signal waveforms from the instrument room without bringing an oscilloscope to the site

FSA130 Verification Tool

Supports condition-based maintenance

- ⊞ FSA130 Verification tool can predict sensor status



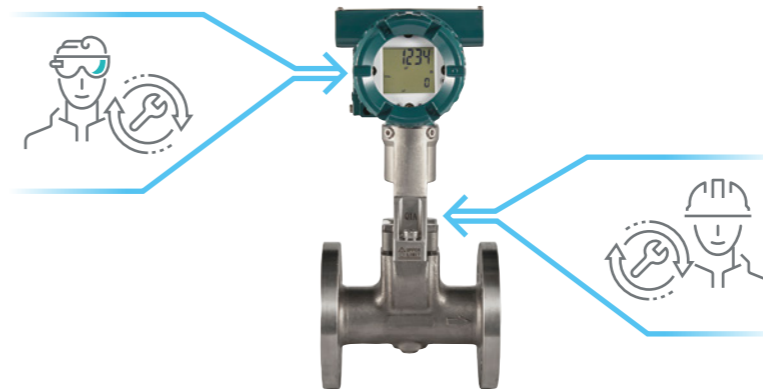
Sensor state trends and prediction

Expert Solution Utility and Maintenance

Smart device maintenance

Easy to identify process-side or device-side abnormality

- ⊞ Process diagnostics detect piping vibration and fluid fluctuations
- ⊞ Self-diagnostic function monitors device health

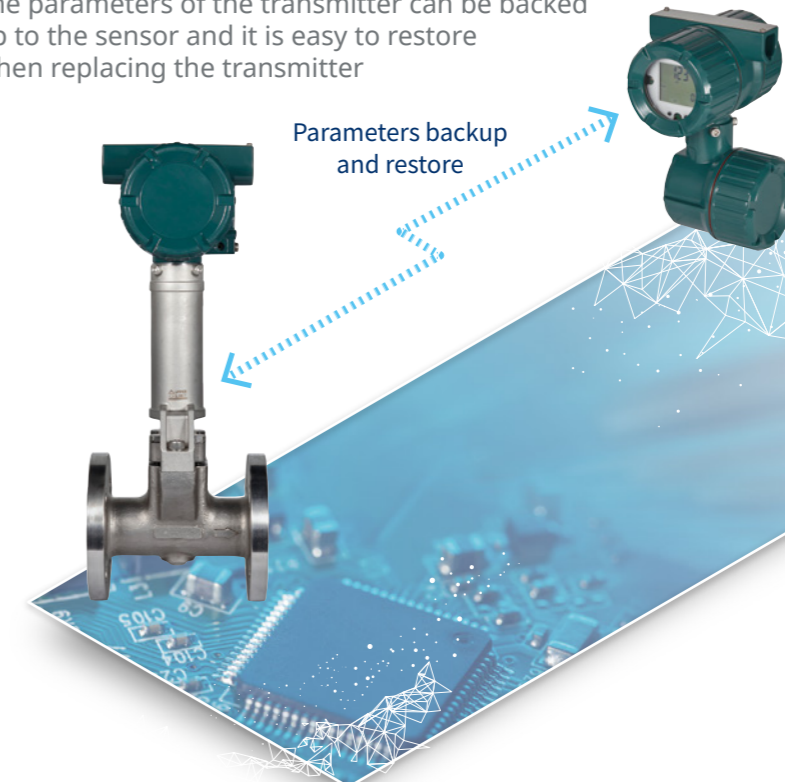


Easy maintenance

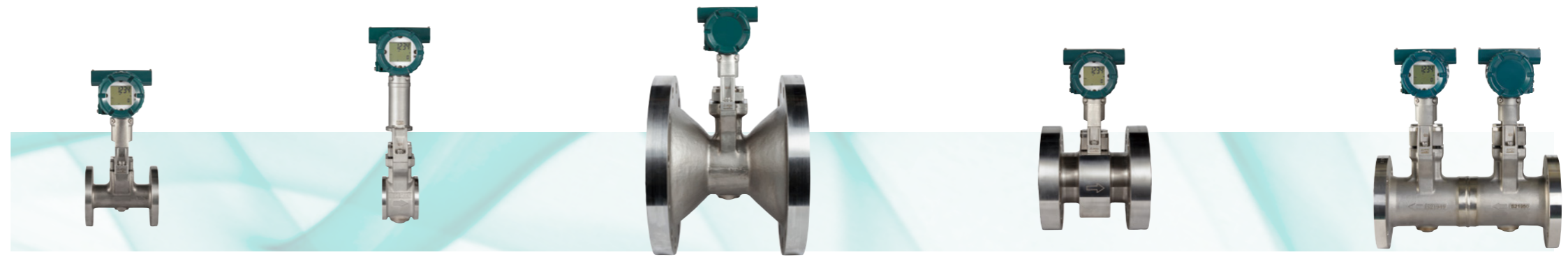
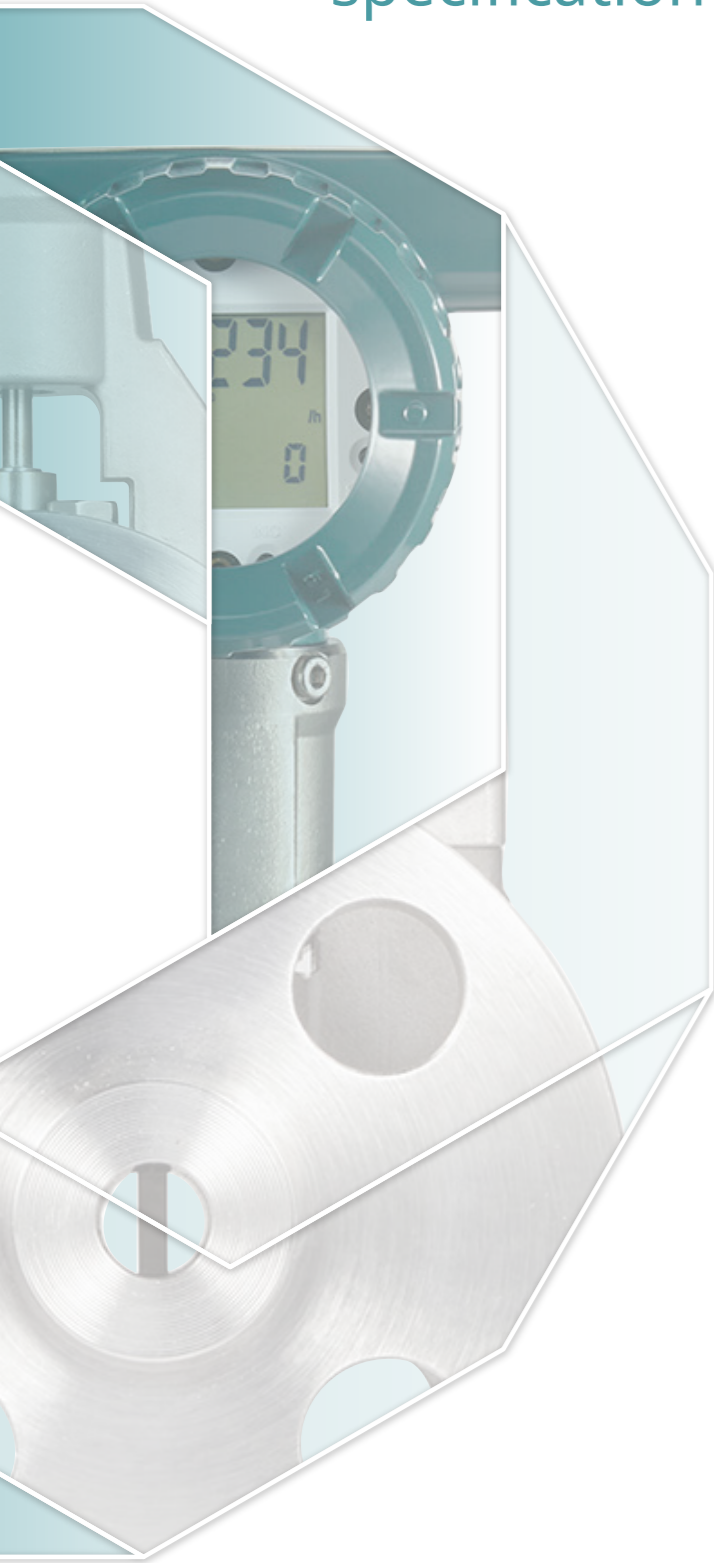
- ⊞ Yokogawa's unique shedder bar structure is known for its robustness and long-term stability
- ⊞ The shedder bar can be removed for cleaning or replacement in case of unforeseen circumstances

Reduced downtime

- ⊞ The parameters of the transmitter can be backed up to the sensor and it is easy to restore when replacing the transmitter



Outline specification



| | | |
|---------------------------------------|--|--|
| Type of body | General Type, Reduced Bore Type (1 or 2 Size Reduction), High Pressure Reduced Bore Type (1 Size Reduction), Dual-Sensor (Welded) Type | |
| Type of shedder bar | General Type, General Type with Temperature Sensor, Long Neck Type, Long Neck Type with Temperature Sensor, High Temperature Type, High Temperature Type with Temperature Sensor, Cryogenic Type | |
| Fluid to be Measured | Liquid, Gas, Saturated Steam, Superheated Steam (Avoid multiphase flow and sticky or corrosive fluids) | |
| Volumetric flow rate accuracy | Liquid | ±0.75% of reading |
| | Gas/Steam | ±1.0% of reading |
| Connection Size | Wafer | 15, 25, 40, 50, 80, 100 mm 1/2, 1, 1-1/2, 2, 3, 4 inch |
| | Flange | General Type: 15, 25, 40, 50, 80, 100, 150, 200, 250, 300, 400 mm 1/2, 1, 1-1/2, 2, 3, 4, 6, 8, 10, 12, 16 inch Reduced Bore Type (1 Size Reduction): 25, 40, 50, 80, 100, 150, 200 mm 1, 1-1/2, 2, 3, 4, 6, 8 inch Reduced Bore Type (2 Size Reduction): 40, 50, 80, 100, 150, 200 mm 1-1/2, 2, 3, 4, 6, 8 inch High Pressure Reduced Bore Type (1 Size Reduction): 25, 40, 50, 80, 100, 150 mm 1, 1-1/2, 2, 3, 4, 6 inch Dual-Sensor (Welded) Type: 15, 25, 40, 50, 80, 100, 150, 200 mm 1/2, 1, 1-1/2, 2, 3, 4, 6, 8 inch |
| Process connection | Wafer, Flange ASME Class 150 to 1500, EN PN10 to PN40, JIS 10K to 40K | |
| Material | Body: Stainless steel, Nickel alloy, Shedder bar: Duplex stainless steel, Stainless steel, Nickel alloy Gasket: Stainless steel, Nickel alloy | |
| Process Temperature Range | -196 to 450 °C Depends on the shedder bar type and material | |
| Process Pressure Limit | From -0.1MPa to the process connection pressure rating | |
| Ambient Temperature Range | -50 to 85 °C Depends on the shedder bar type, material and display installed condition | |
| Cable entry | ASME 1/2NPT, ISO M20x1.5, JIS G1/2 | |
| Communication and input/output | HART 7 communication, 4 to 20 mA DC, Pulse, alarm, or status output, Analog input | |
| Conformity Standards | Safety Requirements, EMC, PED, EU RoHS, CE marking, NACE, SIL2, NE21, NE107, ABS, DNV, CRN, Morocco Conformity Mark | |
| Explosion protection | ATEX Ex db/Ex ia, IECEx Ex db/Ex ia, FM Ex db/Ex ia, FMc Ex db/Ex ia, Japan Ex db, Korea Ex db/Ex ia | |

OpreX™ Through the comprehensive OpreX portfolio of products, services, and solutions,
Yokogawa enables operational excellence across the enterprise.

**Yokogawa Electric Corporation
World Headquarters**

9-32, Nakacho 2-chome, Musashino-shi, Tokyo 180-8750, Japan
<http://www.yokogawa.com/>

Yokogawa Corporation of America

12530 West Airport Blvd, Sugar Land, Texas 77478, USA
<http://www.yokogawa.com/us/>

Yokogawa América do Sul Ltda.

Alameda Xingu, 850 - Alphaville Industrial,
Barueri - São Paulo/SP, 06455-030, Brazil
<http://www.yokogawa.com.br>

Yokogawa Europe B. V.

Euroweg 2, 3825 HD Amersfoort, The Netherlands
<http://www.yokogawa.com/eu/>

Yokogawa Electric CIS Ltd.

1, Samarskaya street, business center Novion, Moscow, 129110, Russia
<http://www.yokogawa.ru>

Yokogawa Middle East & Africa B. S. C. (c)

Building 577, Road 2516, Busaiteen 225, Muharraq, Bahrain
<http://www.yokogawa.com/bh/>

Yokogawa India Ltd.

Plot No.96, Electronic City Complex, Hosur Road, Bangalore - 560 100, India
<https://www.yokogawa.com/in/>

Visit our website (Read or Click QR code) :



Yokogawa China Co., Ltd.

Room 1801, Tower B, Hongqiao Nanfeng City,
No.100 Zunyi Road, Changning District,
Shanghai, 200051, China
<http://www.yokogawa.com/cn/>

Yokogawa Engineering Asia Pte. Ltd.

5 Bedok South Road, Singapore 469270, Singapore
<http://www.yokogawa.com/sg/>

Yokogawa Electric Korea Co., Ltd.

(Yokogawa B/D, Yangpyeong-dong 4-Ga), 21, Seonyu-ro 45-gil,
Yeongdeungpo-gu, Seoul, 07209, Korea
<http://www.yokogawa.com/kr/>

Yokogawa Solution Service Corporation

9-32, Nakacho 2-chome, Musashino-shi, Tokyo 180-8750, Japan
<http://www.yokogawa.com/yjp/>

Printed in Japan, 207(KP) [Ed : 02/d]

Trademarks

All brand or product names of Yokogawa Electric Corporation in this bulletin are trademarks or registered trademarks of Yokogawa Electric Corporation. All other company brand or product names in this bulletin are trademarks or registered trademarks of their respective holders.

Subject to change without notice.

All Rights Reserved. Copyright © 2021, Yokogawa Electric Corporation